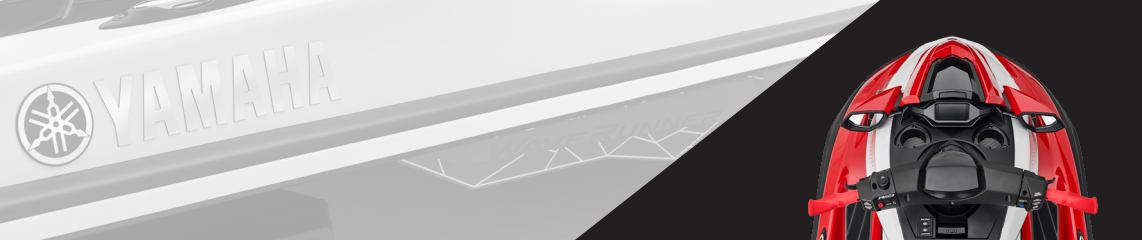


MAINTENANCE MATTERS[®]

A SIMPLE GUIDE FOR THE LONGEVITY OF YOUR WAVERUNNER[®]





PROTECTION AND PEACE OF MIND WHY MAINTENANCE?



Yamaha wants you to have an outstanding ownership experience. Maintenance plays a big part in that. As the top selling PWC manufacturer, we're here to share knowledge and simple tips on the subject.



Yamaha WaveRunner® personal watercraft are manufactured to provide you with years of enjoyment. However, they live in one of the harshest environments imaginable. Regular maintenance is important in helping your WaveRunner meet the demands of these challenging environments, and only you can make sure it happens.

Spending a relatively small amount of time making sure your WaveRunner is in proper condition is simple to do, and:

- You'll have more hours of trouble-free enjoyment on the water.
- You'll preserve your investment with a higher resale value.
- Your WaveRunner will be ready when you are.
- It's easier and costs less to maintain than repair.
- Yamaha dealers stand ready to help.



What are the basics?

Keep your WaveRunner ready to run with basic maintenance like:

- Changing engine oil every 50 hours or once a year
- Flushing regularly
- Maintaining your battery
- Helping to prevent corrosion

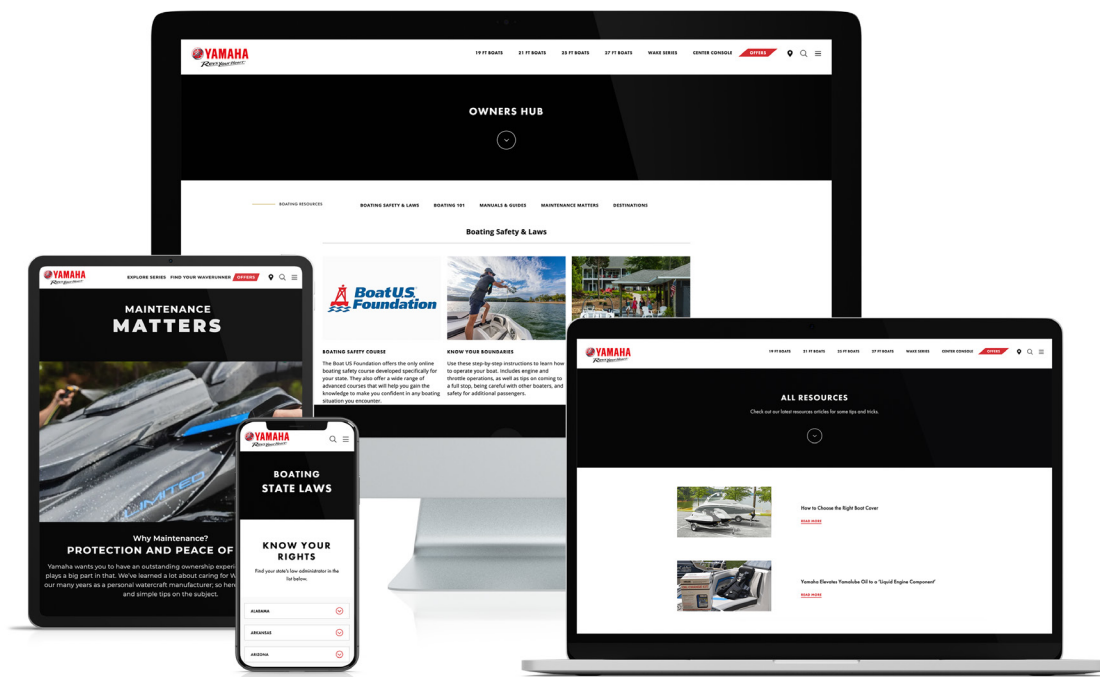
This simple guide will walk you through all of these items and more using:

- Information in an easy-to-read-and-understand format
- Checklists to help make sure you've covered it all, until it becomes second-nature
- Referrals to online resources like the WaveRunner Owners Hub for info on maintenance and technology

WaveRunner maintenance doesn't need to be difficult or expensive. Whether you do it all yourself or have one of approximately 590 authorized WaveRunner dealers do parts of it for you, we're committed to helping you maintain your WaveRunner in a way that's easy to do and easy to understand. **Let's get started.**

CONTENTS

Let's Get Started	4
Corrosion Prevention	6
Fuel & Fuel System	10
External Appearance	13
Electrical System	14
Engine Oil & Lube	16
Interval Maintenance	19
Storage & Care	20
Extended Storage	21
Things to Remember	24
Why Yamaha?	26



FIRST THINGS FIRST LET'S GET STARTED



We boaters can take a lesson from pilots, who perform a simple walkaround of their craft before each and every use. They know taking a few short minutes to do this is key to safety and enjoyment. Each time before you get on the water, you should do the same.

In the pre-launch checklist below, you'll find information that you can use to help make sure you fully enjoy your day on the water. It's regular attention to these basic items that will help make riding your WaveRunner® the safe and enjoyable experience it's meant to be.

PRE-LAUNCH CHECKLIST

- 1.** Remove the seats and any under-seat storage compartments. Leave the engine compartment open for a few minutes to allow any fuel vapors to escape.
- 2.** Check fuel system for leaks (visual and "sniff test"). Check fuel level for trip (1/3 out, 1/3 return, 1/3 spare).
- 3.** Inspect steering and all controls for proper function. For detailed information on inspection procedures, see applicable Owner's Manual.
- 4.** Ensure registration numbers are properly displayed, plus current registration and other necessary documentation is onboard.
- 5.** Ensure trailer hitch and safety chains are secure, and inspect trailer wires and connections.



- Check and/or prepare fire extinguisher, first aid kit, visual and audible distress signals.

- Ensure all passengers have properly fitted PFDs.

- Check the weather and file a float plan with a friend

- Check load and secure gear from shifting.

- Prepare small tool kit.

- Verify your vessel is in compliance with all applicable boating laws.

Keep in mind you're never alone.

- **Yamaha dealers stand ready to help.** With approximately 590 authorized WaveRunner dealers nationwide, one can assist you with proper maintenance of your Yamaha WaveRunner. From regular maintenance to installation of parts and accessories, they have the tools and the training to do the job right. And they feature Genuine Yamaha and Yamalube® maintenance and care products. That's important.
- **Yamaha website.** For additional information on why "Maintenance Matters," including helpful "how to" information and a complete list of Genuine Yamaha and Yamalube maintenance and care products and accessories, please visit YamahaWaveRunners.com.



DEFEND AGAINST THE ELEMENTS CORROSION PREVENTION



While your Yamaha WaveRunner® dealer can help you with, or even do, most of your general and preventive maintenance, corrosion mitigation is something you can only do yourself.



Regardless of where you boat, corrosion attacks both the inside and the outside of your WaveRunner—every day, all the time. Some forms you can see, some you can't, and it can take only a short time for the damage to begin. Even those boating in freshwater have corrosion-mitigation duties to attend to. Rainwater can even have corrosive effects that can be damaging to your WaveRunner. So it's vital to be diligent in your anti-corrosion defense.

Your dealer can provide the right products to help prevent some forms of corrosion, but their regular and diligent use is strictly up to you. The following are answers to common questions about how to mitigate the presence and damage of corrosion.



Where do I need to concentrate my fight against corrosion?

Corrosion can happen pretty much anywhere on or in your WaveRunner: inside, in your fuel system or in the internal cooling water passages, and on the outside, in various electrical connections and exposed metal components.



What's so important about flushing my WaveRunner? I boat exclusively in freshwater, do I still need to?

Your Yamaha WaveRunner is raw-water cooled, meaning it uses the water it's operating on as cooling water. All water, fresh or salt, contains contaminants that will eventually build up in the cooling passages over time. Additionally, saltwater is naturally corrosive and any remaining in those cooling water passages after use is left there to do its worst. Saltwater can also experience crystallization when exposed to heat above 170 degrees, which causes deposits to form and potentially restrict cooling water passages. For these reasons, it's a must that you flush your engine thoroughly with fresh, clean water after every use.

How do I go about flushing my WaveRunner?

Flush the cooling water passages to prevent them from clogging with salt, sand or dirt.

- Place the watercraft in a horizontal position.
- Remove the seats and removable watertight storage compartment. Refer to your owner's manual for removal and installation instructions.
- Connect the garden hose adapter to a garden hose.
- Loosen the flushing hose connector cap and remove it. Insert the garden hose adapter into the flushing hose connector by pushing down and twisting clockwise until it is securely connected.
- Connect the garden hose to a water tap.
- Make sure that the area around the watercraft is clear, and then start the engine. Immediately after the engine starts, fully turn the water supply on so that water flows out continually from the jet thrust nozzle.
- Run the engine at idling speed for about 3 minutes, watching the engine condition. If the engine stops while flushing, turn the water supply off immediately, repeat previous step and continue.
- Turn the water supply off.
- Discharge the remaining water out of the cooling water passages by alternately squeezing and releasing the throttle lever quickly for 10 to 15 seconds.
- Stop the engine.
- Remove the garden hose adapter, and then securely install the flushing hose connector cap by tightening it until it stops.
- Securely install the removable watertight storage compartment and seats in their original positions.

Note: Do not supply water to the cooling passages when the engine is not running. The water could flow back through the muffler into the engine, causing severe engine damage.

Note: Do not run the engine over 4000 RPM on land. Also, do not run the engine more than 15 seconds without supplying water, otherwise the engine could overheat.

What is “dry corrosion”? What causes it and what can I do about it?

Dry corrosion occurs in areas not in direct contact with water—exhaust systems, for example. The outside of most exhaust system components is cooled by raw water to prevent overheating. When today’s ethanol-enhanced fuel is burned, it creates by-products known as sulfate salts. These salts are highly corrosive, especially when exposed to very hot temperatures. If the WaveRunner’s cooling water passages are not kept clean by regular flushing (the exhaust area in this example), hot spots can form on the interior of the exhaust components, concentrating the sulfate salts’ corrosive effects. The result is corrosion from the inside out. That’s why flushing your engine with fresh, clean water for 3 minutes after each trip is a vital part of preventing even dry corrosion. It helps the cooling system run at maximum efficiency by keeping the cooling water passages clean and clear, which helps minimize the heat inside the engine, making it less susceptible to dry corrosion.

How can I fight corrosion on the outside of my WaveRunner?

It’s a good practice to set up a regular schedule and stick to it. There are quick and simple things you should do after every use if you boat in saltwater, and periodically if freshwater is your game. These include visual inspections you should do every time. If you’re unsure about what to do and when, your authorized Yamaha WaveRunner® dealer can help.

- 1 • Rinse it.** Don’t spare the hose when returning from a trip, particularly in saltwater. Rinse the entire exterior with clean water. Give the outside of the WaveRunner a once over with some mild soap, Yamaclean® Pro-Wash Spray and a soft cloth. (Do not use liquid dish soap, it can strip off important protectants.) Go ahead and wash the whole WaveRunner and trailer. Wiping it down with a good quality chamois afterward helps keep it all looking sharp.

Note: If salt build-up has become a problem, or your WaveRunner’s engine has somehow been directly in contact with saltwater, it’s okay to gently rinse portions of the engine with clean, fresh water to remove salt and other deposits. Just use a hose on low pressure—not a spray attachment—and don’t rinse around the air intake area. Rinse out the inside of the seat, too. Make absolutely sure both the engine and the seat are completely air dry before reinstalling the seat.

- 2 • Spray it.** Liberally spray the entire dry engine with a protectant—Yamashield™ for saltwater environments and silicone spray for freshwater environments. Spray all external engine surfaces and the electrical connections to keep them corrosion-free.
- 3 • Check it.** Do a quick visual inspection of your WaveRunner every time you use it. Look for anything out of the ordinary and investigate if need be. Keep a special eye on electrical systems. Check the battery terminals. If corrosion appears on either, consult with your dealer for cleaning and protection products..



Pre-Operation Checks and Maintenance:

- Inspect seat and hatch seals for damage and wear. Worn seals will allow water entry. Apply Yamalube® Silicone Spray Protectant & Lubricant to the seals for water resistance and protection.
- Check fuel cap rubber seal and replace if damaged. A damaged cap will allow fuel contamination.
- Inspect engine compartment for rust or corrosion. Apply rust inhibitor as needed.

Post-Operation Checks and Maintenance:

- Wash and wax.
- Apply Yamaclean Vinyl Dressing after each use for UV protection to prevent cracking. Remove and place seat vertically against a wall to help drain any water from the seat foam. This will prevent water from dripping out onto a clean engine after the seat is reinstalled.
- Wash jet pump inside and out. Regularly maintain using Yamalube® Yamashield™ or Yamalube Silicone Spray Protect & Lubricant.
- Fill fuel tank completely to prevent condensation from forming in the tank between use. For two-stroke models fill the oil tank with Yamalube 2W.
- Rinse the engine compartment with fresh water and Yamaclean Pro-Wash Spray. In a saltwater environment, Salt-Away® will greatly reduce the corrosive effects from salt exposure.
- Inspect the air filter for signs of water intrusion. Clean air box and replace air filter as needed.
- Flush engine with fresh water for at least 3 minutes to remove salt traces as spelled out on page 7.
- Mop up excess water in the bilge and allow to dry completely before installing the drained and dried seat.
- Check all exhaust and cooling system hose clamps for looseness and corrosion.
- Check engine mounts for looseness, corrosion, or damage from saltwater and chemicals that were in the bilge during use. Replace as necessary.
- Apply rust inhibitor as needed.



KEEPING YOUR MACHINE CLEAN FUEL & FUEL SYSTEM



The largest source of trouble with marine engines lies with the fuel and fuel system. Paying regular attention to both can help prevent major headaches down the road. From hoses and connections to proper filtration and even fuel additives, time spent maintaining your fuel system helps keep you safe and your boat ready for action. This is especially true if your WaveRunner® is not used every day.



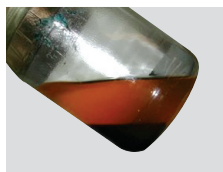
What is ethanol and why is it so bad for marine engines?

Ethanol has been added to most of today's fuel supply as an oxygenate to help reduce emissions. It's also used to extend domestic fuel supplies.

Ethanol is alcohol, and alcohol is "hygroscopic," which means it attracts water molecules. Since nearly all marine fuel tanks are vented to the atmosphere, water can (and will) collect in your fuel. When the concentration of water molecules

in your fuel tank reaches just ½ of 1%, the water molecules will bond with the alcohol and sink to the bottom, where your fuel pick-up is. Depending on the amount of water ingested into your engine, this can result in everything from running problems to catastrophic damage.

Ethanol, being alcohol, is also a powerful solvent that can loosen debris in your fuel tank and all the tanks and lines it was in before it got to you. Once in your engine, this debris can cause everything from running issues to a no-start, no-run condition. That's no fun.



What can I do to protect myself from the potentially damaging effects of ethanol?

Fortunately, there are simple procedures that can help, but it's important that you do your part. This is one part of maintenance you must proactively do for yourself.

1. Add Yamalube® Fuel Med RX to every of fuel. Make sure to add a quality, marine-specific, non-alcohol-based formula, like Yamalube® Fuel Med RX. These formulations are specifically designed to work effectively in the moisture-rich environments common to boats. And don't believe some of the claims you see today; no matter what you add to bad gas, it's still bad gas. No additive will restore stale fuel, remove water, or cure ethanol-related issues.



Tip: Today's gasoline can begin to break down in a matter of weeks, not months. Make sure to treat every tank of fuel, not just for extended storage. It's cheap protection against a world of hurt.

2. Add Yamalube Engine Med RX internal engine cleaner to every tank of fuel. The cleansing additives in the majority of today's gas are a great start, but they're formulated for automobiles, so they may not work as well on your WaveRunner. Do them one better. Engine Med RX makes performance-robbing carbon chemically unable to stick to internal engine components. Engine Med RX is a proprietary blend of synthetic anti-corrosion additives that helps protect the "yellow metals" in your fuel system (copper, brass and silver solder) from corrosion. These are key components to proper fuel system operation. This helps maintain their performance and reliability. Engine Med RX also cleans gum and deposits off internal engine and fuel system components.

3. Buy your gas where they sell a lot of it. The goal is always to keep your WaveRunner's fuel fresh and potent. Why buy gas that's already been sitting around untreated? Buy the freshest fuel you can find, and at fill up, treat each tank with Yamalube Fuel Med RX. Add this before adding the fuel so they mix up well. It's an easy, proactive and protective habit to get into.



What are some other tips I need to know about my fuel system?

- **Check fuel system components before each trip.** It's important to visually and physically check the condition of the fuel hoses and connections for any signs of leaks or cracking each time you use your WaveRunner®. Give everything the "sniff test."



- **Get rid of carbon and keep it out.** Yamaha Internal Engine Cleaner is a dealer-only applied product that is the strongest and most effective way to clean out carbon and other build-up from the inside of your engine. Once done, be sure to use Engine Med RX regularly to help keep it that way.

- **Gas containers.** Be sure to add Fuel Med RX and Engine Med RX before filling them up, and keep them in a cool, dark place if possible.

All the items in this catalog are available through your local authorized Yamaha WaveRunner dealer. More information can be found at **the Owners Hub at YamahaWaveRunners.com**.



BABY YOUR BABY EXTERNAL APPEARANCE



Nothing matches the pride you feel in your clean, well-maintained WaveRunner. Keeping your WaveRunner looking and performing like new has longevity benefits, too. Here are some tips and easy procedures you should perform regularly to help protect and preserve your WaveRunner.

Make it easy on yourself. Just like you clean the inside of your WaveRunner by fresh water flushing after each trip, thoroughly spray down your WaveRunner with fresh, clean water. Use a soft cloth and a mild, marine-specific cleaning agent, like Yamaclean® Pro-Wash spray, then rinse it again.

Note: Don't use liquid dish soap or ordinary household detergents when washing your boat. They remove waxes and other protective coatings your boat needs.

To protect and preserve. Don't be afraid to spray the entire engine liberally with Yamalube® Yamashield™ in saltwater environments and Yamalube Silicone Spray Protectant & Lubricant in freshwater environments. It not only helps give your engine that just-detailed look, but also helps prevent the effects of corrosion.

Keep it covered. Protect your WaveRunner from the elements when not in use or when trailering by using a custom-fit Yamaha WaveRunner storage cover. If your watercraft sits outside, a custom-fit cover is a worthwhile investment.

Whether washing, waxing, polishing stainless steel or deodorizing life jackets and wet storage areas, you'll find the marine-specific formulas to make it easy and to do it right at your local Yamaha Marine dealer. Just look for the yellow stripe on the Yamalube label.

Tip: If the products you need are not currently in stock, ask that they be ordered, and accept no substitutions. Insist on Genuine Yamalube cleaners and care products.



TAKE CHARGE OF YOUR ELECTRICAL SYSTEM



Because WaveRunners constantly operate on or are near water, electrical system care is even more important, especially in highly corrosive saltwater environments. Make sure your electrical system is always ready to perform with these simple checks and procedures.



Check the wiring and connections.

The electrical system's job is to carry voltage from one place to another. If the voltage can't make the journey, or if it's diminished when it gets there, the receiving device will not function properly, if at all. The goal is to have as much voltage (or electrical energy) arrive at Point B as left Point A. As electricity passes through a device, some parasitic loss is normal. However, corrosion impedes electricity's ability to travel, which can cause significant voltage loss or intermittent

voltage. Either can wreck the good times, but with simple visual inspections and physical actions these scenarios can usually be avoided.

Some electrical corrosion can be easy to see, such as corrosion on battery posts or electrical panel connections. But some damage can be more difficult to see, such as internal corrosion that has rotted some or all of the individual strands inside a wire's cover. You can use an ohmmeter to check electrical connections and wires for excessive resistance. There should be no more than 0.1-0.2 ohm resistance between electrical connectors on each end of a wire. Any more than that and you should investigate further.



Don't forget the battery.

Make sure to use the right size and type recommended in your owner's or service manual. If there's any question about a battery's performance, have it load tested. Any auto parts store can do this for you, or you can do it yourself with the right equipment.

Caution: Make sure that there are no fuel fumes present when making, breaking, or checking battery connections and condition. Give the area the "sniff test" to check for fumes. If in an enclosed area, leave the seat off for a few minutes, thoroughly air out the space, or take the battery outside to test it. Please plan and protect accordingly.

All battery cable connections must be clean, with the correct fasteners for the specific battery installed in your craft. Loose connections can cause frustrating intermittent issues or a full-time "no run" condition. A dirty or corroded connection can impede electricity's ability to travel, and a battery terminal connection may be corroded, yet appear clean. To avoid any doubt, always remove the terminal connection and clean both sides of the connecting materials down to bare, shiny metal, then reinstall and tighten the connection properly.

Check the electrical connections.

Corrosion often occurs where wires meet. Visually check electrical connections at the battery. Wiggle wires and connections to check for looseness. If either is found, disconnect and clean the connection with emery cloth or fine-grit sandpaper, then reinstall and tighten properly. Finally, spray all electrical connections with a product like Yamashield™ which puts down an anti-corrosive layer and leaves behind a protective film that helps prevent corrosion going forward.



Don't spare the spray.

If you haven't already sprayed connections with Yamashield or Yamalube® Silicone Protectant & Lubricant, remove WaveRunner's seat and liberally spray the entire engine.

We've got the goods.

Yamaha offers a complete range of electrical system care products, including original-equipment NGK® spark plugs, Yamalube Yamashield Protectant & Lubricant,

Yamalube Silicone Protectant & Lubricant, and Yamalube Contact Cleaner. They're the best you can get for your WaveRunner®, and they're all available through your local Yamaha Marine dealer.



LET'S BEGIN WITH CHOOSING THE OIL ENGINE OIL & LUBE



You've heard the expression "choose wisely." When it comes to choosing an engine oil and filter to protect your Yamaha, this couldn't be more true. Using the correct oil and filter at the recommended intervals is the single most important thing you can do for your WaveRunner.®

Checking your oil level.

The oil level check procedure for your Yamaha four-stroke WaveRunner is a bit different than the procedure for your car. It's easy to get an accurate reading if you follow the procedure outlined in your owner's manual. A few things to keep in mind:

- Always check your engine oil level with the engine up to full operating temperature.
- It is OK if the oil level is anywhere within the hash marks of the oil level dipstick.
- If you do need to top off your engine oil, be sure to use Yamalube® 4W 10W-40 Oil.



What oil should I use?

The engine in your Yamaha WaveRunner is vastly different from your automotive engine; so avoid regular automotive engine oils. Use a motor oil specifically formulated for the rigors of the marine environment, like Yamalube 4W for four-stroke WaveRunners, and Yamalube 2W for two-stroke WaveRunners.

Let's look at a few reasons why:

1. Engine load. The typical loads placed on your WaveRunner are much heavier than on your automobile, having to overcome a much greater amount of drag to create performance. This means your WaveRunner is working much harder than your automobile's engine. Yamalube 4W and 2W marine engine oils contain specific anti-wear additives to account for this.

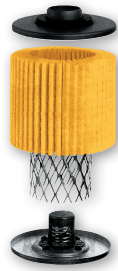
2. Engine speed. Your WaveRunner operates at a much higher RPM than your automobile's engine. It must rev higher to create higher speeds, rather than just changing gears like your car. That means your WaveRunner may run all day long at 4500-6000 RPM, rather than the 2500 RPM your car reaches at highway speeds. That's tough on your oil, and can literally shear (or split) the molecules in ordinary automotive oil, reducing lubricity. Yamalube 4W and 2W have special shear-stable polymers to combat this and provide superior lubrication at all times.

3. Operating temperature. WaveRunners are cooled using raw water, which is often cool to very cold. On the other hand, saltwater will begin to crystalize if its temperature is raised above 170°, potentially causing blockage in the cooling passages and leading to engine overheat and possible damage. Because of these two factors, your WaveRunner operates full-time at a temperature much lower than your automobile, and requires very different qualities in its lubricating oil. Yamalube marine oils have detergents, dispersants and viscosity index improvers to meet these marine-specific challenges head-on.

4. Operating environment. Your WaveRunner is constantly near water, sucking in very humid air directly off the water's surface in order to operate. This humid air also gets inside combustion chambers through open valves when the engine is not running. And in a saltwater environment, that air is even more corrosive. It's one of the harshest environments imaginable for an engine. Yamalube 4W and 2W are purposely formulated with special anti-corrosion agents to help combat and prevent the corrosive effects of this environment.



Yamalube® WaveRunner engine oils provide specific protection other oils don't, using a proprietary blend of marine-specific anti-wear additives, shear-stable polymers, corrosion inhibitors, detergents, dispersants and viscosity index improvers. In short, they're far superior to automotive engine oils in their strength of protection, durability and corrosion resistance.



Aren't all oil filters pretty much the same?

Outwardly, perhaps. But it's what's on the inside that counts most. Yamaha oil filters are manufactured specifically to protect Yamaha engines, using only the finest components and construction methods available. This includes a special filter media and metal filter media bases (instead of cardboard), to help them achieve a level of durability and filtration far superior than most "off-the-shelf" oil filters. From the quality of the materials used to their high-quality construction, they simply outperform and out-protect most aftermarket alternatives.

What Yamalube oils are right for my WaveRunner?

Yamalube 4W: Reformulated to better protect your investment from the harsh effects of cold starts, hours of trolling and high-load, high-speed operation, its special anti-corrosive additives are particularly suited for the harsh marine environment.

Yamalube 2W: This Yamaha-formulated oil provides outstanding protection for two-stroke, water-cooled engines, with its special blend of additives that help combat ring stick, corrosion, varnish and wear. It's a standard by which other two-stroke oils are judged.



Can I change my own oil?

Absolutely, but you don't have to. If you'd rather leave it to your Yamaha WaveRunner dealer, they will be happy to take care of it for you in their specially trained and properly equipped service department. That also means you won't have to dispose of the used oil yourself. But if you prefer to do it yourself, your Yamaha dealer can set you up with a Genuine Yamalube Oil Change Kit, specific to your Yamaha WaveRunner. It includes the right type and amount of Yamalube oil, and a Genuine Yamaha oil filter. Everything you'll need to do the job right.



TIMING IS EVERYTHING INTERVAL MAINTENANCE



Some maintenance steps, like visual inspections, are best done every day, while others, such as oil changes, are set up at certain intervals.

Yamaha provides easy-to-understand information about how, and when, to perform proper maintenance. Yamaha also offers approximately 590 authorized Yamaha WaveRunner dealers from coast-to-coast, specially trained and equipped to handle most of your WaveRunner's maintenance needs. So whether you get the parts from your Yamaha WaveRunner dealer and do it yourself or have them do the work for you, you'll rest assured knowing you're doing your part to help protect and preserve your Yamaha WaveRunner.



Getting started.

The most accurate and specific maintenance interval information for your particular WaveRunner will be detailed in your owner's manual, which you can find at WaveRunners.Yamaha-Owners-Manuals.com. To determine when service is due, keep your eye on your hour meter. If you don't have an hour meter, it's easy and inexpensive to install one.

To find necessary parts for changing oil, oil filters, spark plugs and air cleaner elements, visit YamahaWaveRunners.com/Owners-hub/Maintenance-Matters

PROTECT AGAINST THE ELEMENTS STORAGE & CARE



WaveRunners are susceptible to damage from exposure to sun, rain, snow, dust, etc. Precautions must be taken routinely to protect them against plastic discoloring and hardening, water collecting in footwells, painted or treated surfaces fading, etc.

Proper storage can help your WaveRunner® retain its factory condition for many years.

- When possible, store the unit indoors or under a shelter that will shield it from the elements.
- When storing the units outdoors is your only option, consider individual covers or a large cover that can be placed over the units during poor weather and extreme sun exposure.
- Take precautions to prevent water from pooling in the footwells. For units not equipped with footwell drains, raising the bow of a trailered unit for storage is a good idea. This “bow up” position can help water drain from the footwells.
- For units equipped with footwell drains, ensure the unit is in a horizontal position and the drain insert holes are clear. Pooled water in the footwells of a WaveRunner should be removed as soon as possible to prevent damage to paint (such as osmotic blistering), graphics, and traction mats.
- When stored outdoors, even units with factory covers installed can accumulate water in the footwells, check and drain the footwells at least twice a month.
- Damage from exposure to the elements is not considered a defect and cannot be covered under warranty.



NOW'S THE TIME TO THINK ABOUT EXTENDED STORAGE



Preparing for extended storage efficiently and effectively means you'll have a worry- and hassle-free experience when you return to using your Yamaha WaveRunner.

Whether you're returning your WaveRunner to a canal behind a Florida vacation home or hitting the water the first warm day after ice-out, you want to get in and go. You don't want to spend time performing tasks that should have already been done—or worse—fixing damage created in the offseason. Take proper precautions. Your Yamaha dealer has the goods if you prefer to DIY. Otherwise, they will be happy to take care of these procedures for you.

Tip: Don't wait to call your dealer about winterization. The threat of the season's first freeze is too late!





What are key things to consider when it's time to store my WaveRunner®?

- **Look it over.** Few things are more important than the visual inspection you do before extended storage. Start by removing the seat to inspect the bilge for any signs of oil or fuel present. Look for anything that appears damaged, missing or out of place, and repair or replace as needed.
- **Replace it now.** Your WaveRunner's engine oil has been working hard to suspend and carry away debris and potential corrosives resulting from the combustion process. Don't wait for spring to change it. Get rid of this nasty oil and the oil filter before you lay up for storage.
 - Tip:** Be sure to lube all grease zerks with the correct grease stipulated in your owner's manual to help force out any water that may be residing there.
 - Tip:** Charge battery fully before storage, and have it load tested to make sure it's going to be up to the task come spring. It's best to check the charge monthly and keep it topped off if you can. If your WaveRunner's stored outside during the cold winter months, don't risk them freezing. Bring your battery indoors to a cool, dry place.
- **Fog it down.** Fogging oil helps protect vital internal engine components during periods of inactivity by coating them with a thick petroleum-based lubricant. This helps prevent rust and corrosion from forming and protects during start-up. Due to the complexity of some WaveRunner engine air intake systems, fogging for long term storage is best performed by a qualified Yamaha technician.
- **Keep it dry.** Water can form in the fuel system during extended storage periods, due to natural condensation. In addition, ethanol fuels can draw water directly from the atmosphere through the tank's vent. Make doubly sure to run the proper storage amount of Fuel Med RX in your fuel, and thoroughly course it through the entire fuel system prior to shut down. Always store with the tank 7/8 full of fuel to help prevent over-accumulation of condensation. Also, never plug or cap the fuel tank vent, as the vent allows for natural expansion and contraction within the fuel system. Plugging the vent may potentially cause damage to fuel tanks and fittings.

- **Clean it up.** Give your WaveRunner a thorough cleaning before extended storage. Always make sure that any item or area in your boat is bone-dry before closing it up or sealing it off. Where applicable, a coat of sealant or wax will serve as a well-worth-it protectant.

Tip: This may be the best time to pull the WaveRunner out of the water and clean the hull as necessary. Remove any marine growth or barnacles with a thorough washing.

- **Get it ready.** Just prior to extended lay-up is an excellent time to perform routine annual maintenance, and to take care of any outstanding service issues. Check the anchor, dock lines and fenders too. Replace any worn or damaged items now so you'll be ready to hit the water when it's time. Also, check the unit for any loose items that need repair. If needed, one of our exclusive Yamalube® Yamabond® formulas will hold things tight.

- **Wrap it up.** Yamaha offers storage covers for WaveRunners that will provide protection from the elements. Many Yamaha dealers offer shrink-wrapping services. This method encapsulates your WaveRunner until you're ready to resume the good times and keeps it looking as good as it did when you wrapped it. Be sure to ask your local Yamaha dealer about it.

- **Make it fun. Make it easy.** Seem overwhelming? It's really not. It's just learning a few procedures and taking time to do them right. Try dividing the chores up among members of your crew. It'll be less work for each of those involved, and the whole process will go faster. Got kids? Give them each a few appropriate tasks to perform and help them understand the importance of their contribution. This will help create a sense of pride and belonging when they're out on the water next season. Still too much? No worries. Just contact your local Yamaha WaveRunner dealer. They'll be glad to take care of all this for you.





DON'T FORGET THINGS TO REMEMBER



Over the years, Yamaha has learned a thing or two about keeping boating fun and enjoyable — not to mention safe. And proper maintenance plays a big role in this. Here are a few related thoughts to carry with you when preparing for good times out on the water.

Keep it simple.

Always be prepared, especially from a maintenance angle, and don't let an easy-to-fix problem spoil your fun. Remember to carry a small tool kit with basic hand tools at all times. Your local Yamaha WaveRunner® dealer can help put this all together.



Trailers need love, too.

Your trailer takes the good times to the water, but it is an often-neglected item when it comes to maintenance. It's not difficult to do, and it's important. Here are a few tips:

- **Lug nuts and a jack.** Check the torque on your trailer's lug nuts regularly. Carry the appropriate tools in your tow vehicle, and make sure you always have the correct jack should a flat trailer tire occur. It's easiest to just put the proper tools in your tow vehicle and leave them there.
- **Carry a spare.** If your trailer doesn't have a spare tire, get one and mount it to the frame. Then, make sure to air it up and check it regularly for the proper pressure. You want it ready and capable to help if it's ever needed.
- **Bunks and rollers.** Anything loose should be tightened, and anything sagging or rotted should be replaced. Make sure all bunks or rollers maintain proper contact with the bottom of the unit to prevent development of hooks or rockers in the hull's surface over time.
- **Hubs and wheels.** Check trailer wheel bearings for signs of water intrusion. Repair as necessary. Periodically grease trailer bearings using a high-quality, corrosion- and water-resistant formula like Yamalube® Marine Grease and a Yamalube Marine Grease Gun.
- **Cables and winches.** Carefully monitor the condition of your trailer's winch cable, particularly if it's made of metal. Replace the cable if there are any signs of cuts, abrasion or chafing to prevent possible injury that could occur if it were to break under load. Make sure the winch handle is free of bends or cracks and is tightened down properly, too. Yamalube Yamashield™ is an excellent choice for lubricating and helping protect winch cables and assemblies from the damaging effects of corrosion.
- **Lights.** Help prevent frustrating trailer light issues with simple care and maintenance. Yamalube Brake & Contact Cleaner will help clean, dry and restore proper taillight connections. It's great for dock lights, too.
- **Brakes.** Whether your trailer's brakes are electrically operated or surge, proper periodic attention is required, particularly in saltwater environments. Make sure to rinse your wheels and brakes thoroughly with fresh, clean water after every dunking.

You can't take it with you. Seriously.

Many areas of the country are experiencing the rampant spread of invasive species like zebra mussels and hydrilla. These "hitchhikers" can easily be transported from waterway to waterway by unsuspecting boaters through trailering. To help prevent their spread, visually inspect your craft and trailer every time you pull out of the water and remove any you find. Make this part of your regular routine after trailering your WaveRunner. The waterway you're headed to next will thank you for it!

CONFIDENCE YOU CAN COUNT ON **WHY YAMAHA?**



No one knows your Yamaha WaveRunner® better than Yamaha, including how to care for and maintain it. That's why the engineers that designed and built your WaveRunner are some of the same engineers that assist in the formulation of specific products designed to help you care for it. And we offer comprehensive, easy-to-understand information about what to do and when, and what to use and where.



We have the products.

Yamalube®. It's the brand behind our reliable motors, and for good reason. They're the only products built around the unique demands, operating characteristics, and applications of Yamaha WaveRunners. Using the proper maintenance products is as important as proper maintenance itself, and Yamaha is committed to helping WaveRunners last. Yamalube products are all specifically designed and manufactured to help maintain the performance and value of your WaveRunner for many years to come. It's all about your satisfaction.



Why is using Genuine Yamaha maintenance and care products important?

- **Factory-approved products versus generic.** The same engineers who designed your WaveRunner test and approve Yamalube products; so you know they're right for the job.
- **Engineered to work better.** Yamaha formulates its products to meet the specific needs of your WaveRunner. Aftermarket product manufacturers use a one-size-fits-all approach that may not fully protect your WaveRunner.
- **Helps protect your investment.** Ultimately, you are solely responsible for the proper maintenance of your WaveRunner; so do it right. Whether you choose to do the work or have your authorized Yamaha Marine dealer do it, insist on Genuine Yamaha and Yamalube maintenance and care products in order to maximize your performance and best maintain the value of your WaveRunner.
- **They're the right tools for the job.** Using Genuine Yamaha maintenance and care products means never having to guess if your investment is adequately or properly protected. That's powerful peace of mind.

We have the information.

Let's face it, the best products in the world do you no good if you don't know how, when, and where to use them. Yamaha makes it easy to know what procedures need to be done, and when. This Maintenance Matters book is proof, and it's just the start.



We have the dealers.

With a nationwide network of approximately 590 authorized Yamaha WaveRunner dealers, there's sure to be one nearby that can help. If you choose to do the maintenance yourself, your local dealer has the Genuine Yamaha and Yamalube products, parts and materials you'll need. Or they can do much of your maintenance for you. They have access to all of the maintenance schedules and proper materials for Yamaha WaveRunners, and the experience and the tools to do the job right. Either way, Yamaha has you covered.

Note: All the items in this catalog are available through your local authorized Yamaha WaveRunner dealer.



YAMALUBE[®]



When it comes to WaveRunners, you get out of them what you put into them. That's why proper maintenance and care is so very important, and you are a big part of making sure it's done and done right. It helps maintain the value of your investment and provide years of trouble-free fun on the water.

Proper maintenance isn't expensive or overly difficult to do. Yamaha's Maintenance Matters contains simple, easy-to-understand information about what to do, how to do it, when to do it and the proper materials to do it with. Additional information and assistance are as close as **YamahaWaveRunners.com** and/or your local authorized Yamaha WaveRunner dealer. Do it yourself, or enlist the highly trained services of your Yamaha dealer to help.

Either way, you'll know that by insisting on Genuine Yamaha maintenance and care products, and by following Yamaha-recommended guidelines, your WaveRunner will be receiving the best of care. In return, it will reward you year after year with relaxation and enjoyment.

Insist on Yamaha, and only Yamaha.

For the name of your Yamaha Marine dealer or for more information on our complete line of Yamaha WaveRunners, call 1-800-88-YAMAHA or visit us at YamahaWaveRunners.com.

REMEMBER to always observe all applicable boating laws. Never drink and drive. Dress properly with a USCG-approved personal flotation device and protective gear. This document contains many of Yamaha's valuable trademarks. It may also contain trademarks belonging to other companies. Any references to other companies or their products are for identification purposes only, and are not intended to be an endorsement.

WaveRunner[®] is a Yamaha brand personal watercraft and not a generic term.

© 2021 Yamaha Motor Corporation, U.S.A. All rights reserved. Volume 1



MWV-MMWR0-00-00

